

**5 Golden Square,
Soho, London, W1F 9BS – Top Floor with Terrace**



OFFICE TO LET | 3,024 sq ft



Location

London's Soho, a world renowned location, has been long established as the most creative and cosmopolitan district of W1. The area is rich in culture, dining experiences and is a hub for industrious business. Golden Square lies at its heart. With occupiers such as Sony, M&C Saatchi, Ingenious Media, and Marion Goodman galleries the square has become one of the most desirable in the West End. Number 5 is situated mid way along its Eastern side. Oxford Circus (Victoria and Central lines) and Piccadilly Circus (Bakerloo and Piccadilly lines) tube stations are within close proximity.

Floor Areas

Floor	sq ft	sq m	
5th Floor	3,024	281	
TOTAL (approx.)	3,024	291	
*Measurement in terms of *NIA			

Description

The floor provides fitted accommodation with a large reception and open plan area and a selection of meeting rooms and private offices leading to a demised terrace at the rear of the floor.

Paul Dart, Partner

020 7025 1392

Rebecca Saxon, Agency Surveyor

020 7025 1397

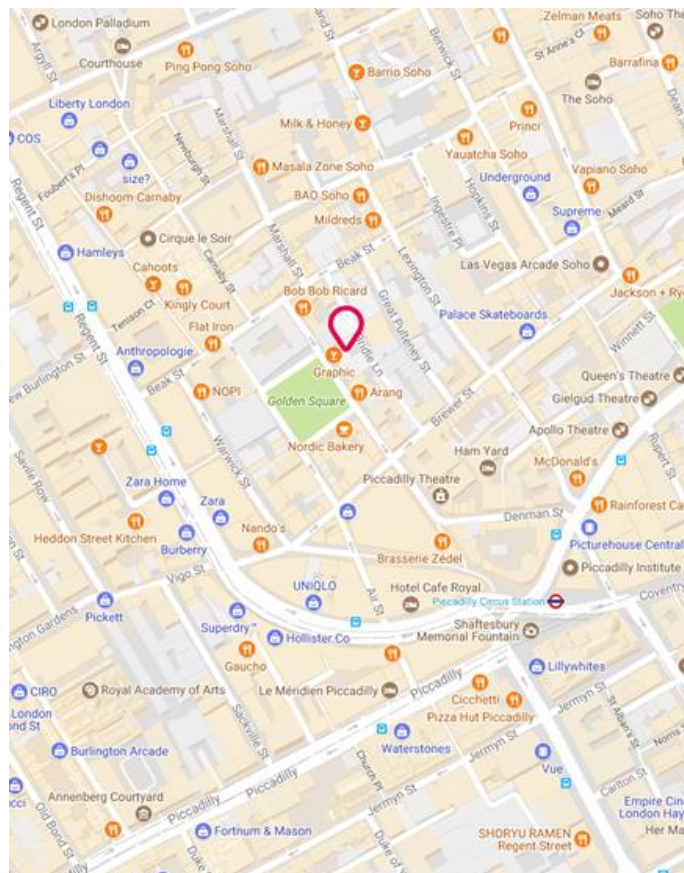
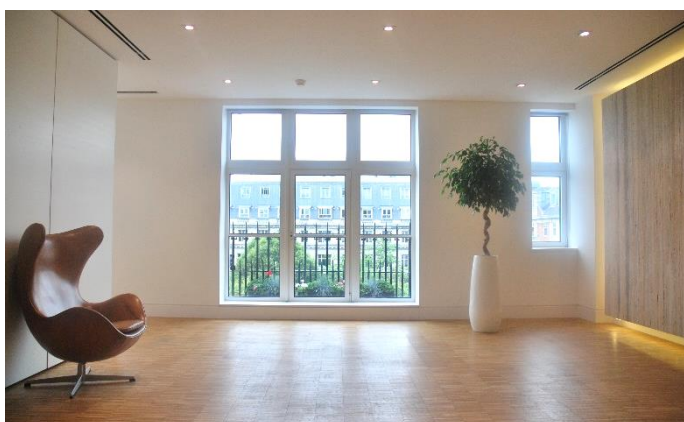
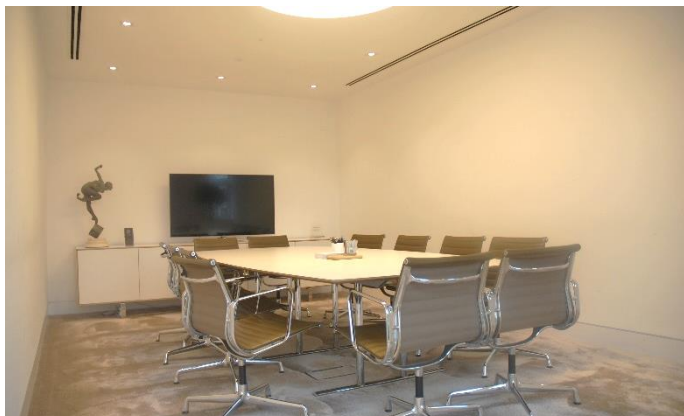
Applicants are advised to make their own enquires in respect of all rates payable to local authorities and taxes. We recommend you see www.voa.gov.uk for further information. None of the systems or services in the property have been tested by us to check they are in working order. Interested parties may wish to make their own investigations. All other information provided is for guide purposes and cannot be relied upon.

Subject to Contract January 2018

5 Golden Square, Soho, London, W1F 9BS – Top Floor with Terrace



OFFICE TO LET | 3,024 sq ft



Terms

Tenure:	Leasehold
Lease:	An assignment of the existing lease until October 2022.
Rent:	Upon request
Rates:	Estimated at £29.46 psf pa (2017/18)
Service Charge:	TBC

Amenities

- Fantastic views over Golden Square
- Modern reception with commissionaire
- Two passenger lifts
- Terrace area to the rear of the floor
- Air conditioning
- Metal tiled raised floor
- Fitted, with sizable boardroom and two further meeting rooms in situ.

Paul Dart, Partner

📞 020 7025 1392
✉️ pdart@monmouthdean.com

Rebecca Saxon, Agency Surveyor

📞 020 7025 1397
✉️ rsaxon@monmouthdean.com

Applicants are advised to make their own enquires in respect of all rates payable to local authorities and taxes. We recommend you see www.voa.gov.uk for further information. None of the systems or services in the property have been tested by us to check they are in working order. Interested parties may wish to make their own investigations. All other information provided is for guide purposes and cannot be relied upon.



Monmouth Dean LLP for themselves and for the lessors or vendors of their property whose agents they are, give notice that: (i) These particulars are set out as a general outline only, for the guidance of intended purchasers or lessees, and do not constitute, nor constitute part of, any other offer of contract. (ii) All descriptions, dimensions, references to condition and necessary permission of use and occupation, and other details are given without responsibility, and any intending purchasers and tenants should not rely on them as statements or representative of fact, but must satisfy themselves by inspection or otherwise as to the correctness of each of them. (iii) No person in the employment of Monmouth Dean LLP has any authority to make give any representation or warranty whatever in relation to this property. (iv) Unless otherwise stated all rents and prices quoted are exclusive of VAT which may be payable in addition. Subject to contract.

Subject to Contract January 2018