

CENTRE POINT

 **OUTERNET**

An architectural rendering of a modern, multi-story building at night. The building features a prominent, dark, angular facade with large glass windows and a central vertical element. The scene is illuminated by streetlights and the building's own lights, creating a vibrant urban atmosphere. In the foreground, a busy street is filled with people walking, and a red double-decker bus is visible on the left. The overall tone is dark and sophisticated.

AVAILABLE SUMMER 2020

Outernet is set to be an internationally recognised destination for commerce, culture, creativity and inspiration, set in the heart of London.

The aim is to create a un-paralleled, mixed-use destination that will fuse events, hospitality, information, retail, workplace and leisure. It will be a dynamic and engaging collection of spaces that are fully integrated with the cultural and physical heritage of the local area, encompassing, as it does, Denmark Street commonly known as Tin Pan Alley.

UNRIVALLED CENTRAL LOCATION

Outernet is situated at the crossroads of Oxford Street, Tottenham Court Road, New Oxford Street and Charing Cross Road with the potential of more than 400,000 visitors a day from the newly expanded Tottenham Court Road station.

Inside the various buildings that make up Outernet there will be a mix of uses, including a flexible urban gallery with an ever changing programme of events, news, products, retail showcases and an ongoing information stream. The mix of uses also includes two events venues, serviced apartments, a boutique hotel, office space, restaurants, bars and shops.



UNRIVALLED CENTRAL LOCATION

3x

Footfall of Oxford Circus¹

48k

Pedestrians an hour using
Tottenham Court Road²

40m

Customer visits per annum
to Covent Garden³

108m

Passengers by 2026
Tottenham Court Road⁴

£8.5bn

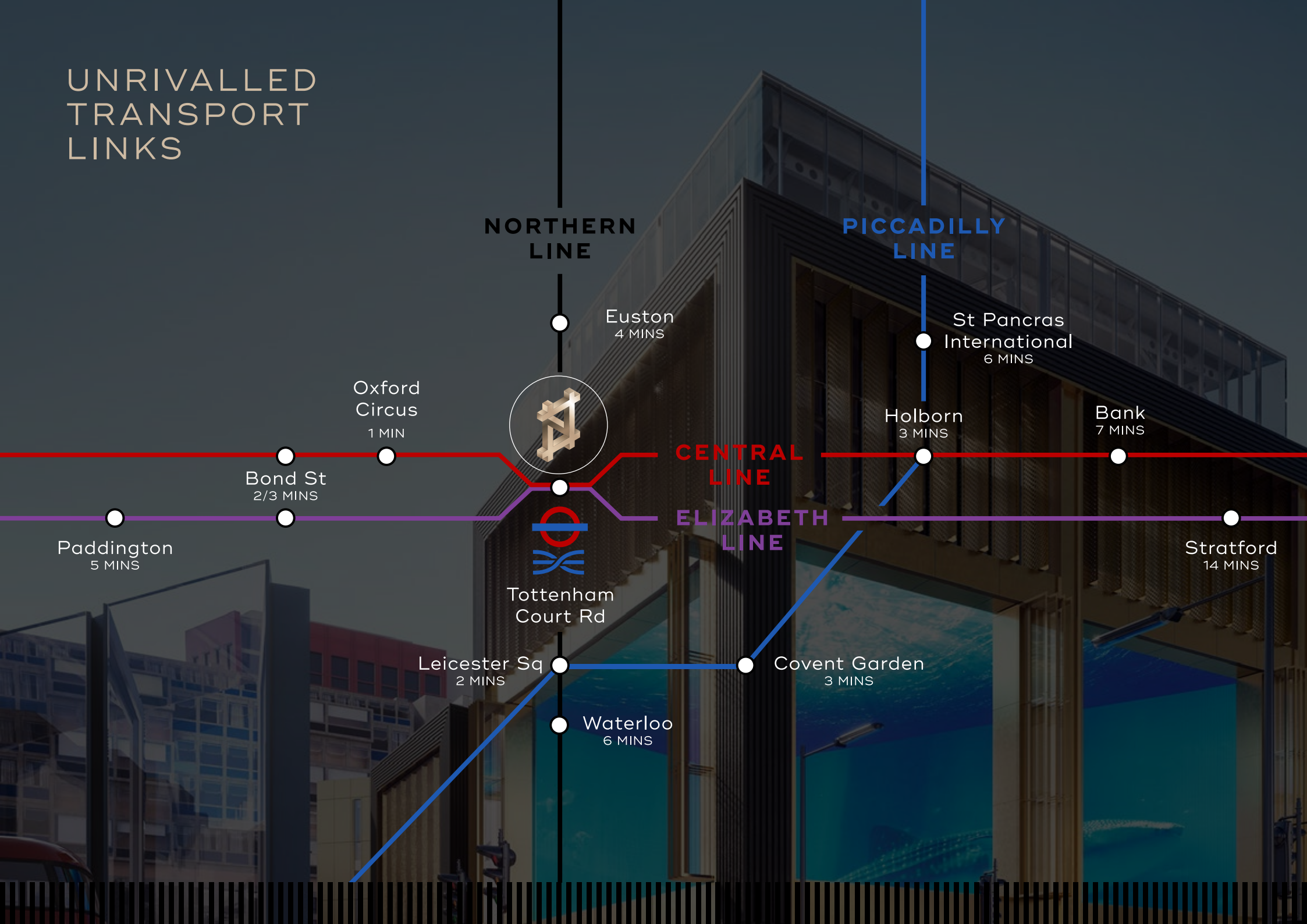
Pounds spent in the West End
per annum⁵



1. Research by CBRE Ltd
2. Research by CBRE Ltd
3. CACI Ltd.; EE Data. 2017

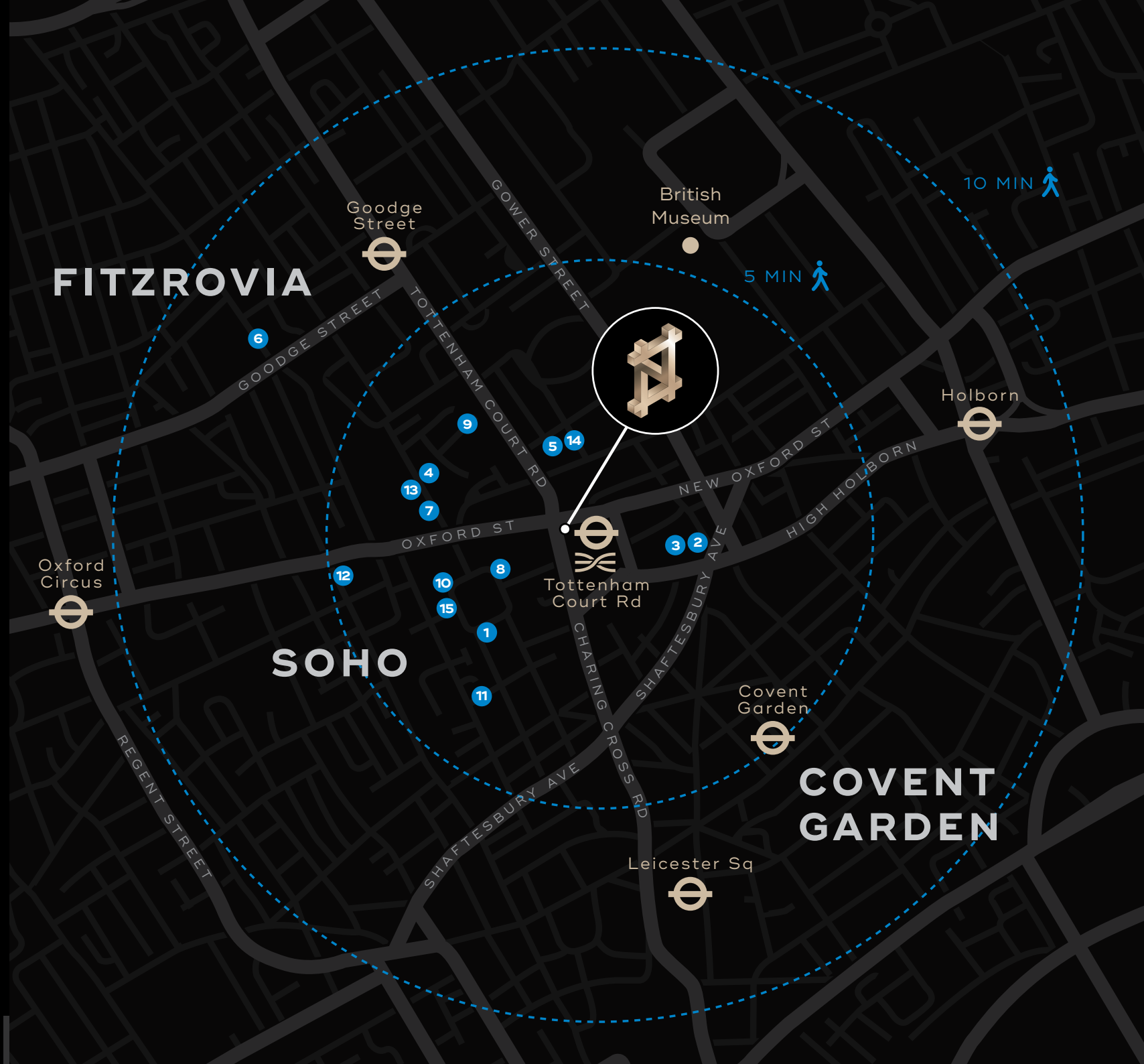
4. Research by CBRE Ltd
5. New West End Company
(NWEC). 2017

UNRIVALLED TRANSPORT LINKS



NEARBY OFFICE OCCUPIERS

- 1 20th Century Fox
31-32 Soho Square
- 2 Google
1-13 St Giles High Street
- 3 NBC Universal
1 St Giles High Street
- 4 Envy Post Production
50a Rathbone Place
- 5 Skyscanner
1 Bedford Avenue
- 6 Estée Lauder
1 Fitzroy Place
- 7 Facebook
1 Rathbone Square
- 8 Palantir
20 Soho Square
- 9 Fremantle Media
1 Stephen Street
- 10 Rightmove
33 Soho Square
- 11 MoneySuperMarket
1 Dean Street
- 12 King.com
180 Wardour Street
- 13 Hive
19-22 Rathbone Place
- 14 William Hill
1 Bedford Avenue
- 15 Dolby
4-6 Soho Square





OFFICES

A striking new scheme which holds a prominent location situated above the Elizabeth Line entrance at Tottenham Court Road/ Charing Cross Road. The Outernet will provide stunning Grade A offices across 6 buildings on the mixed use scheme creating between 4,000 – 30,000 sq ft of new office space.

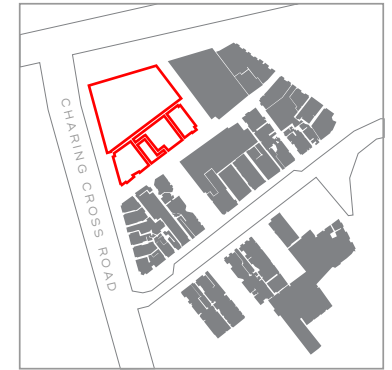
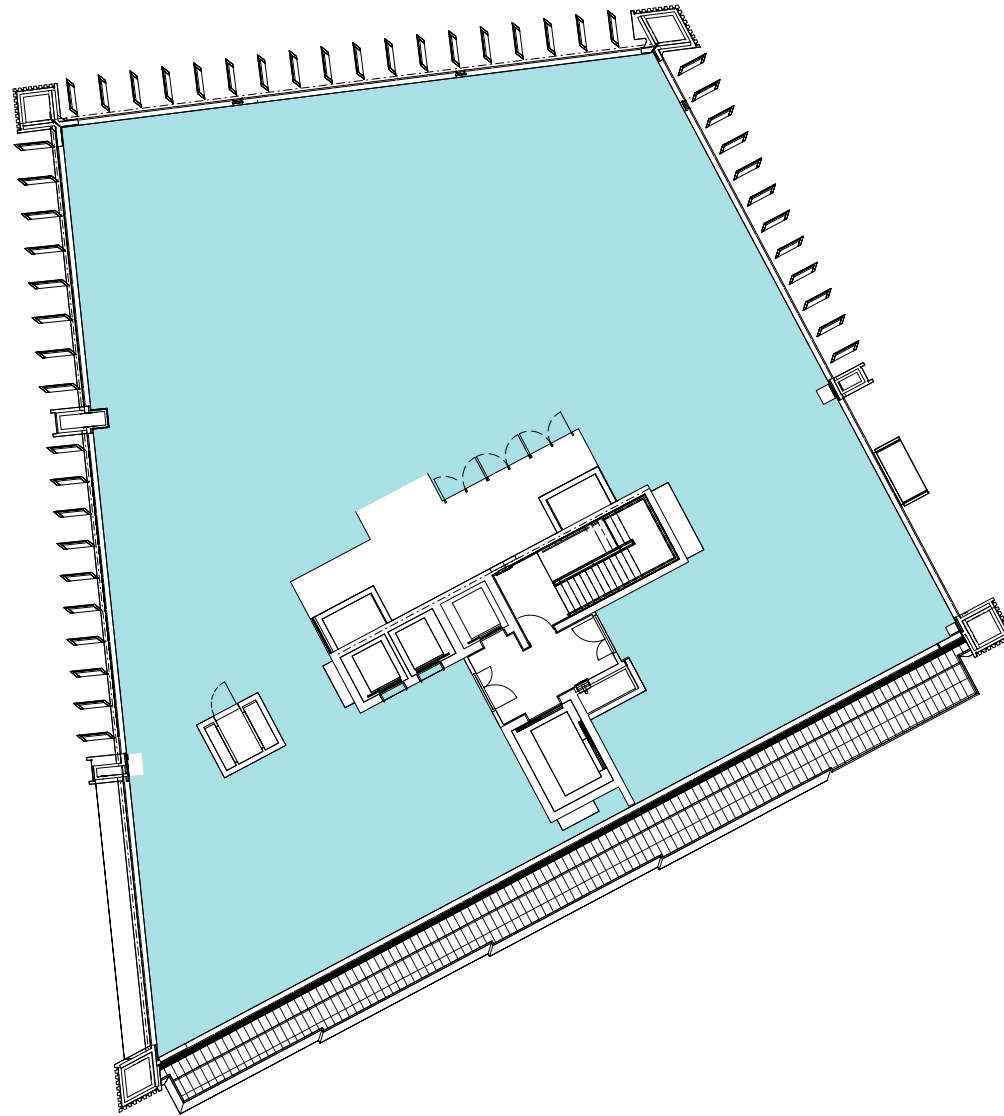
OFFICES

<p>① 1 ST GILES SQ 5TH FLOOR 7097 sq ft (659 sq m)</p>	<p>② 1 ST GILES SQ 3RD FLOOR 2684 sq ft (249 sq m)</p>
<p>③ 2 ST GILES SQ 3RD FLOOR 3306 sq ft (307 sq m)</p>	<p>④ 2 ST GILES SQ 2ND FLOOR 3288 sq ft (305 sq m)</p>
<p>⑤ DENMARK PLACE 3RD FLOOR 1753 sq ft (163 sq m)</p>	<p>⑥ DENMARK PLACE 2ND FLOOR 4765 sq ft (443 sq m)</p>
<p>⑦ DENMARK PLACE 1ST FLOOR 522 sq ft (49 sq m)</p>	<p>⑧ 28 DENMARK ST 3089 sq ft (287 sq m)</p>
<p>⑨ 20 DENMARK ST 1560 sq ft (145 sq m)</p>	<p>⑩ 1 BOOK MEWS 3153 sq ft (293 sq m)</p>



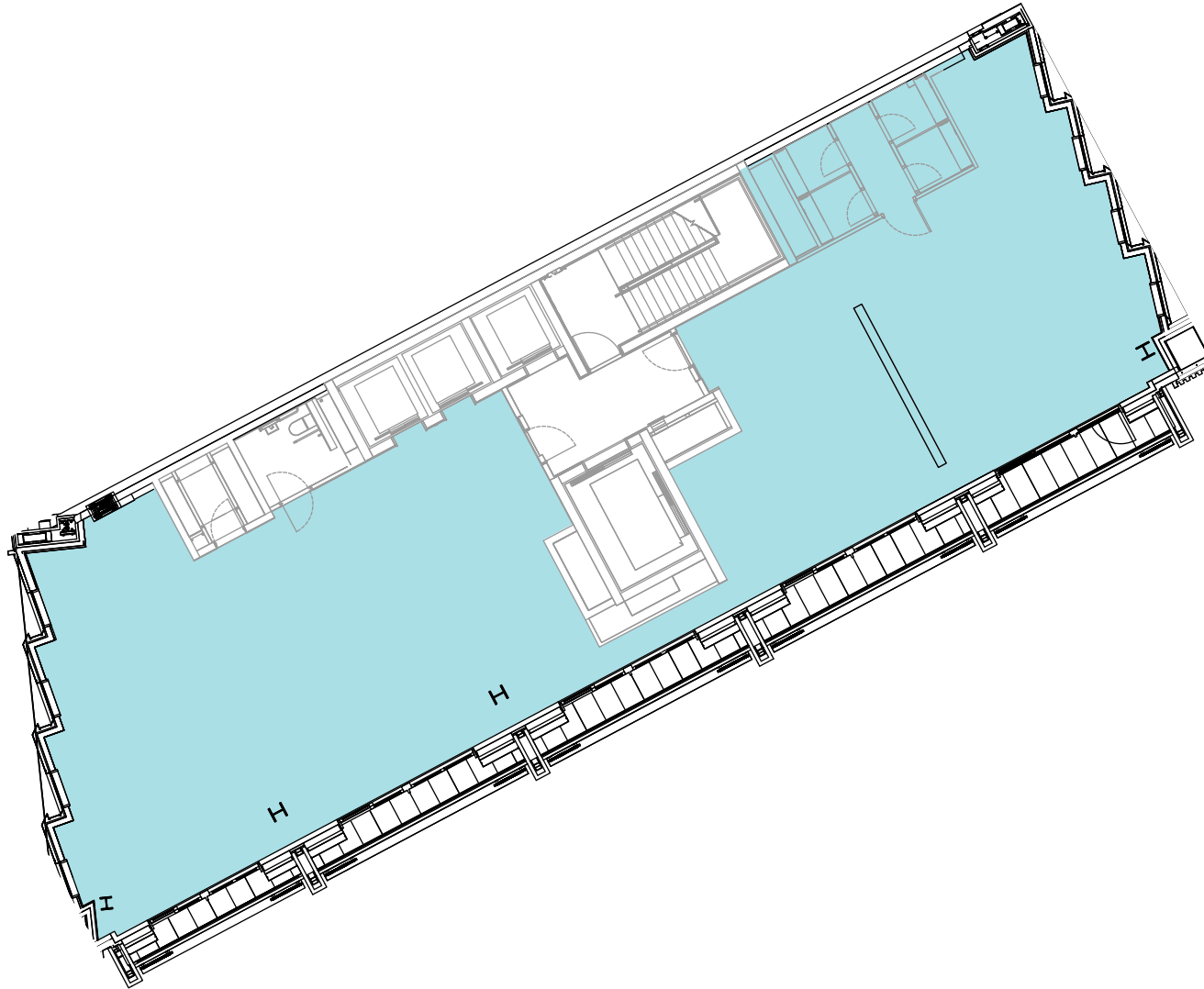
OFFICE FLOORPLANS





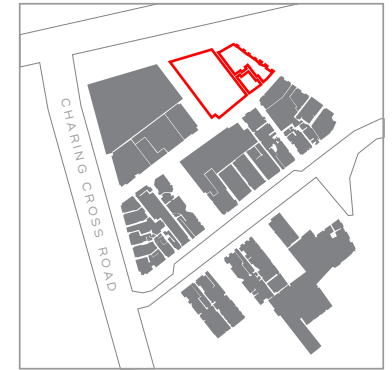
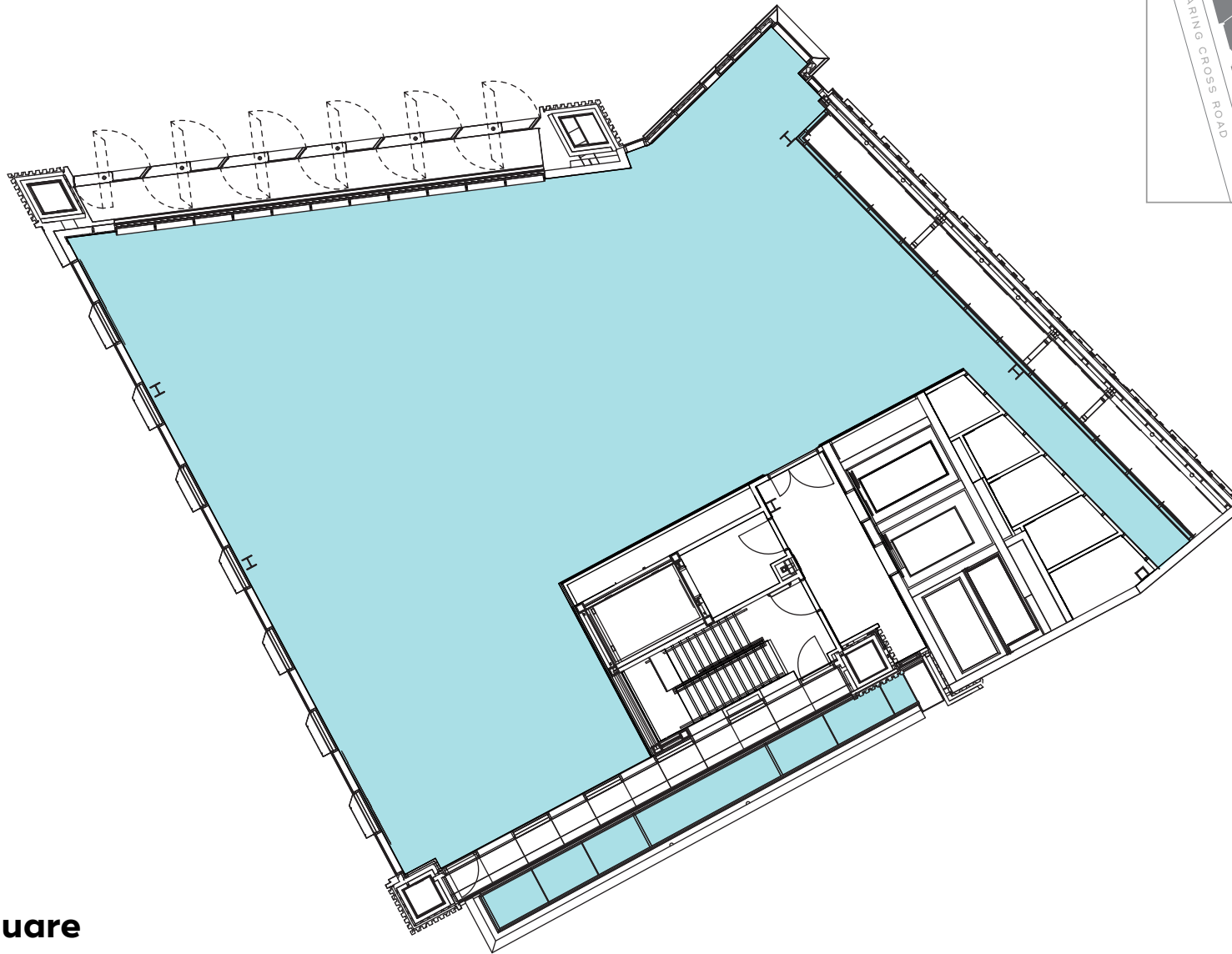
1 St Giles Square
Offices Fifth Floor

7097 sq ft (659 sq m)



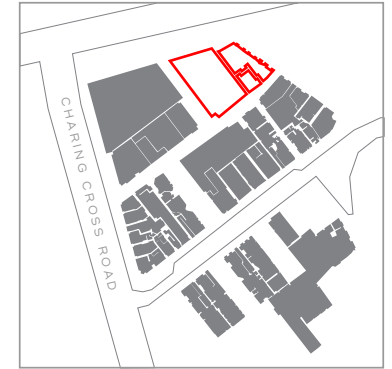
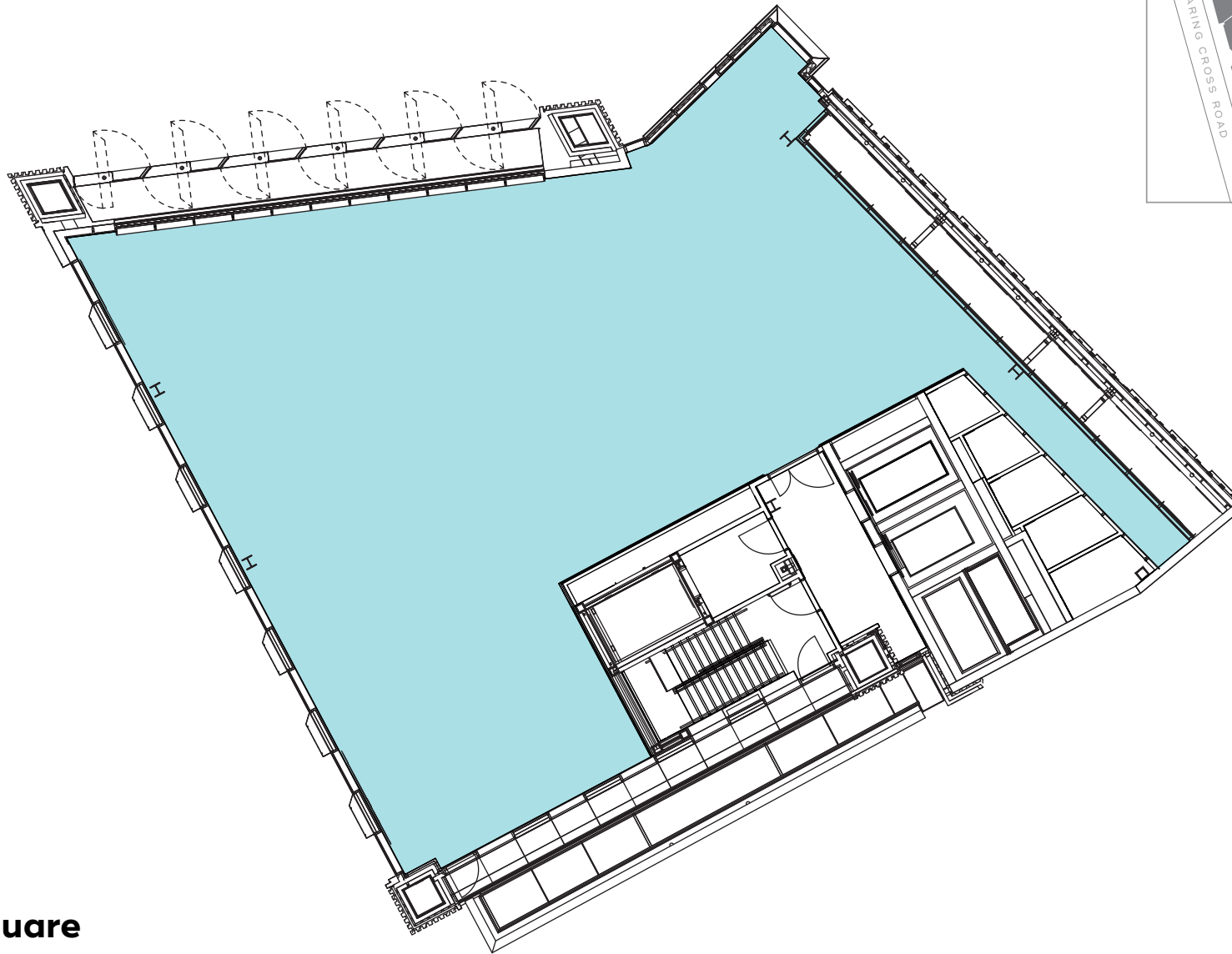
1 St Giles Square
Offices Third Floor

2684 sq ft (249 sq m)



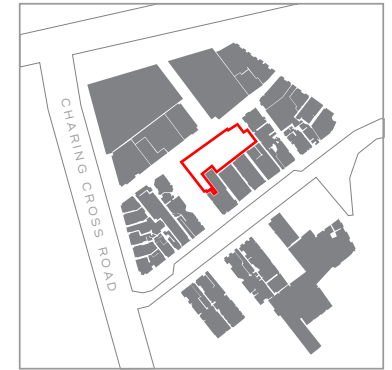
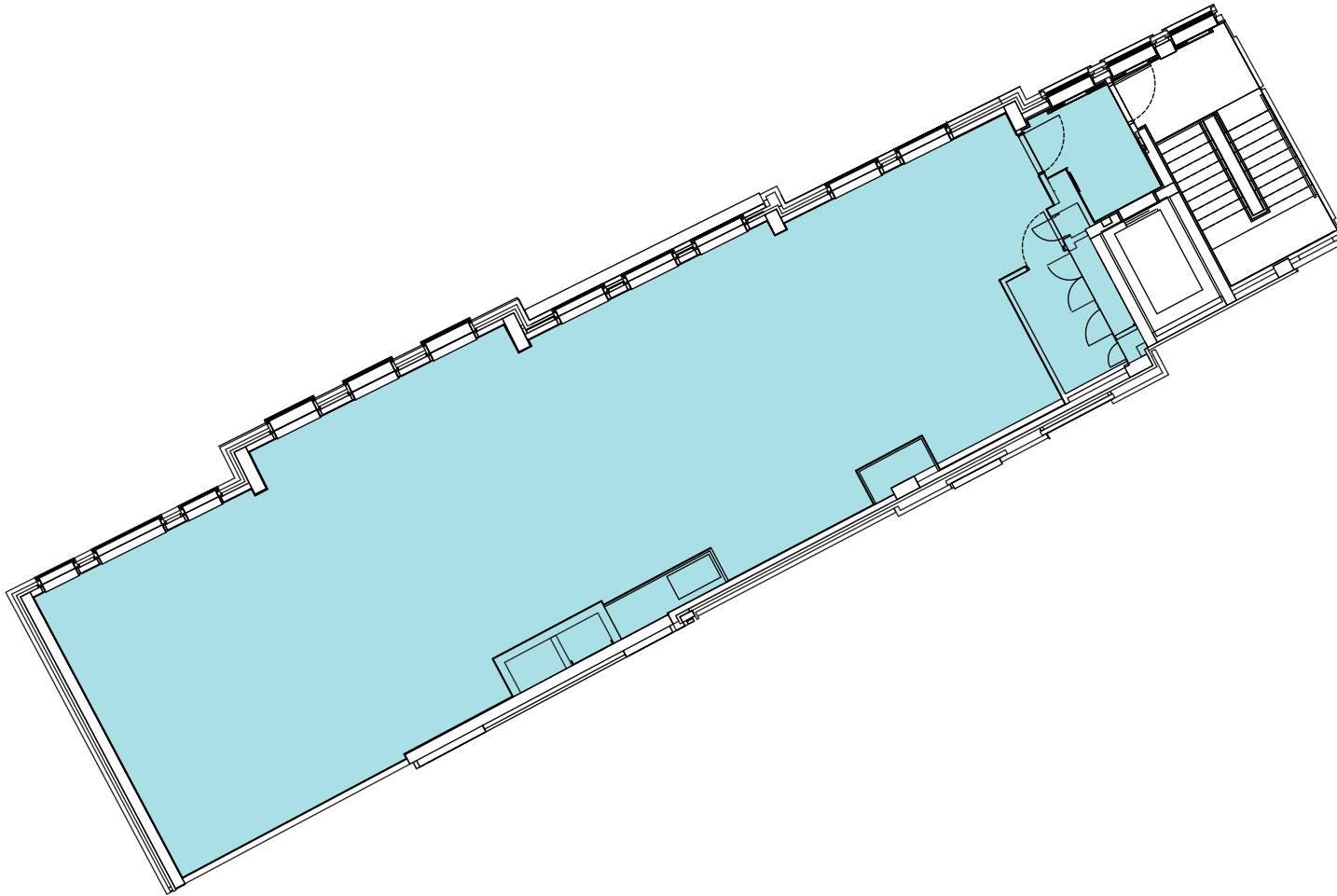
2 St Giles Square
Offices Third Floor

3306 sq ft (307 sq m)



2 St Giles Square
Offices Second Floor

3288 sq ft (305 sq m)



Denmark Place
Offices Third Floor

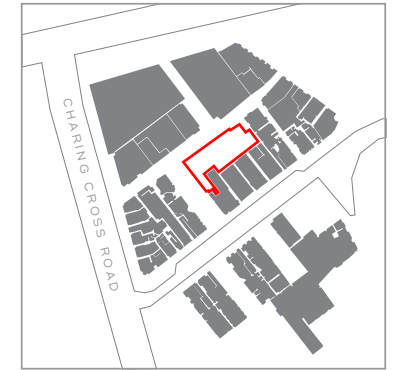
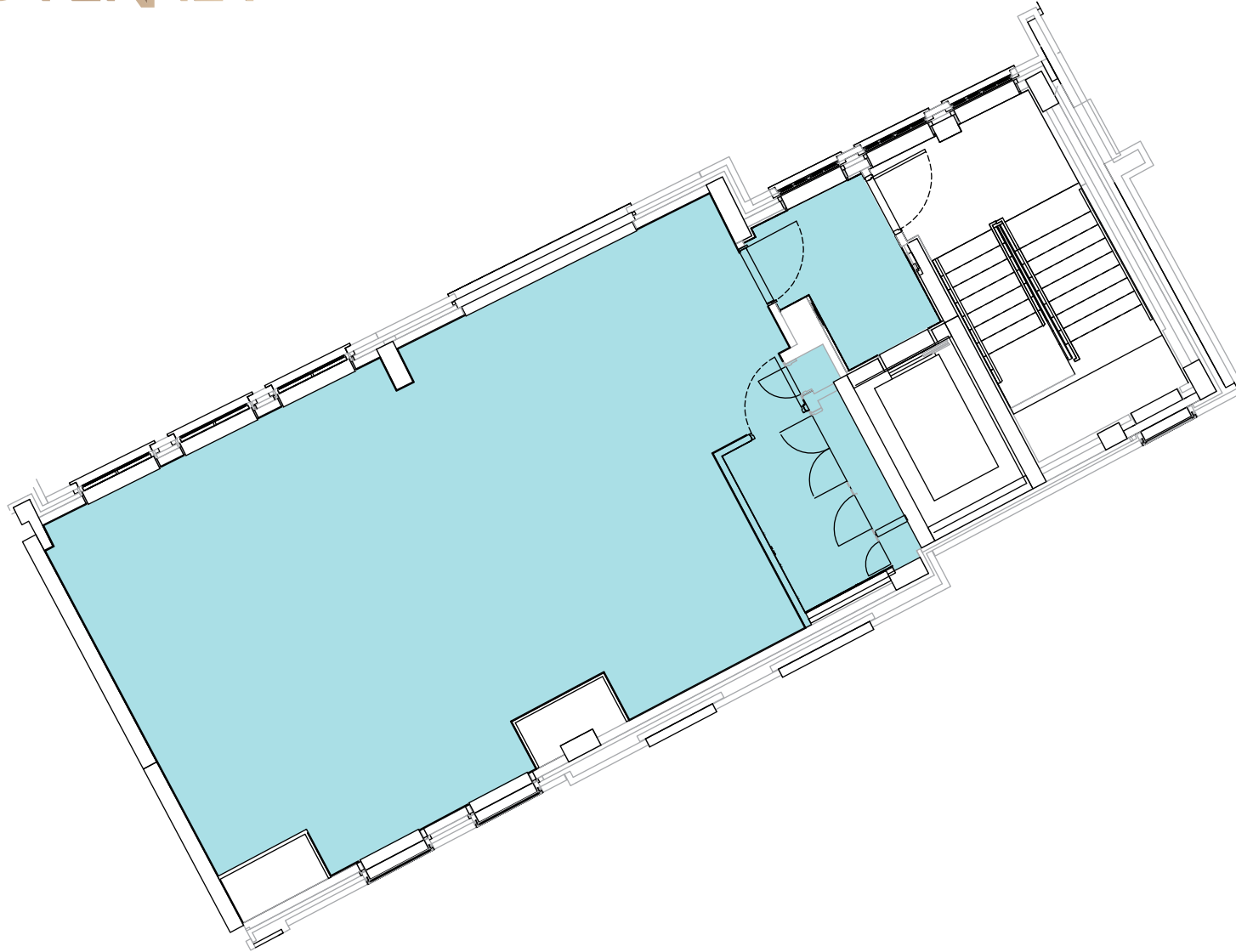
1753 sq ft (163 sq m)





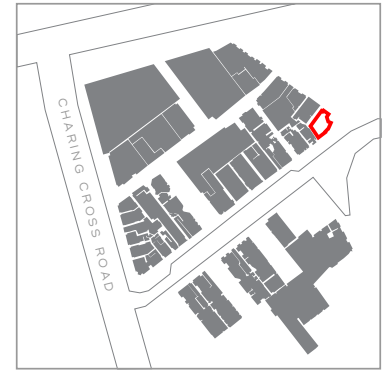
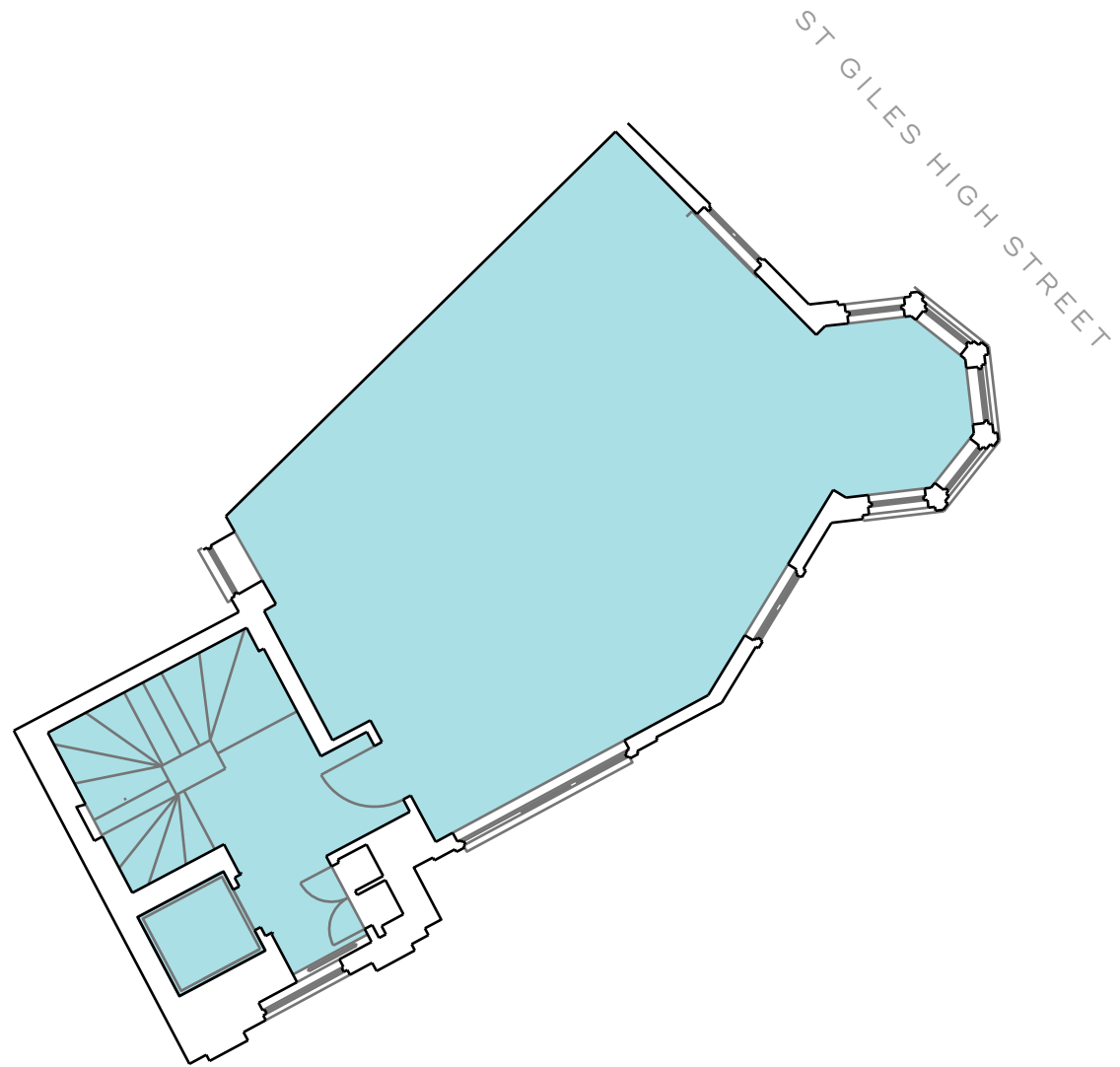
Denmark Place
Offices Second Floor

4765 sq ft (443 sq m)



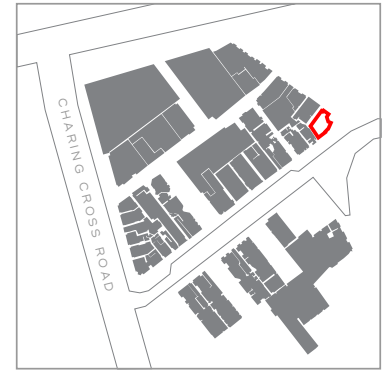
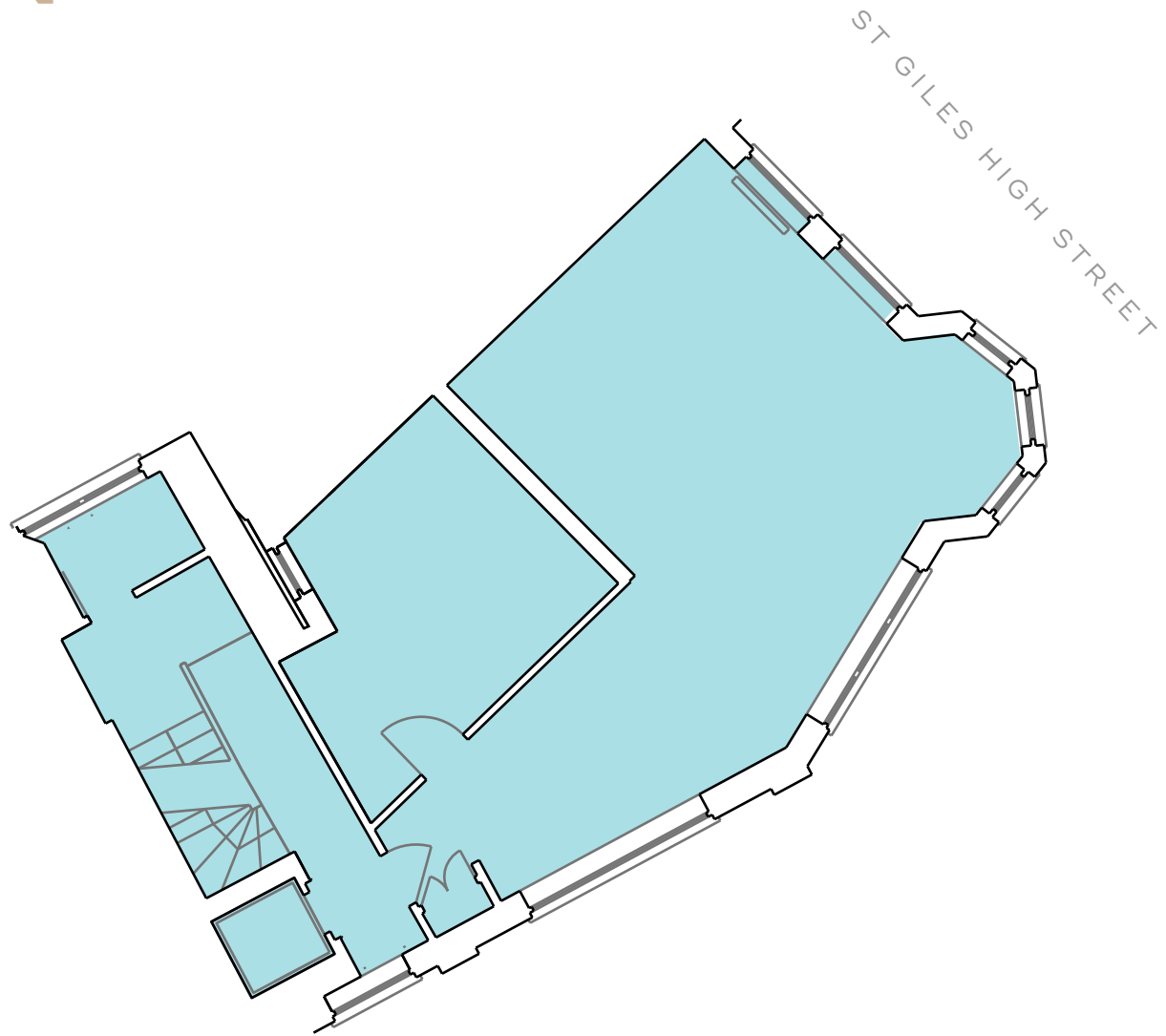
Denmark Place
Offices First Floor

522 sq ft (49 sq m)



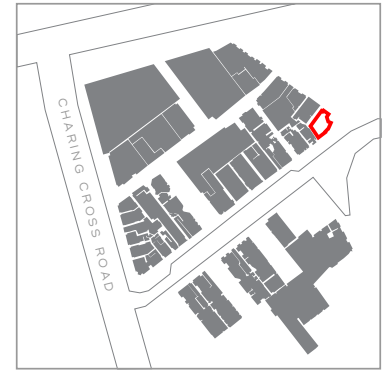
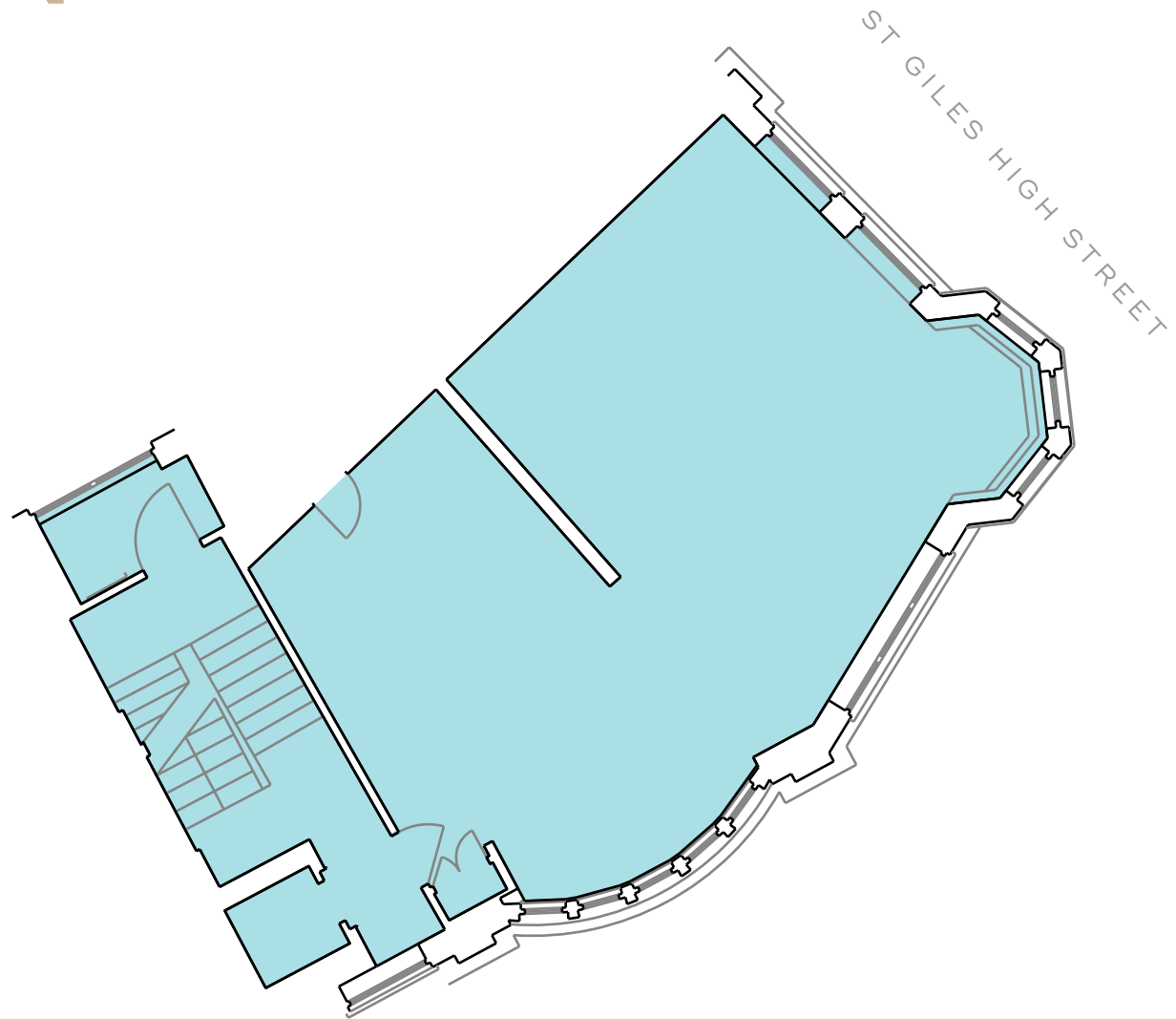
28 Denmark Street
Fourth Floor

547 sq ft (51 sq m)



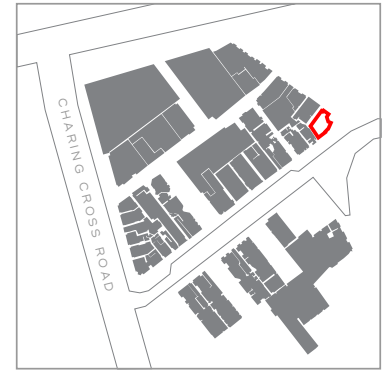
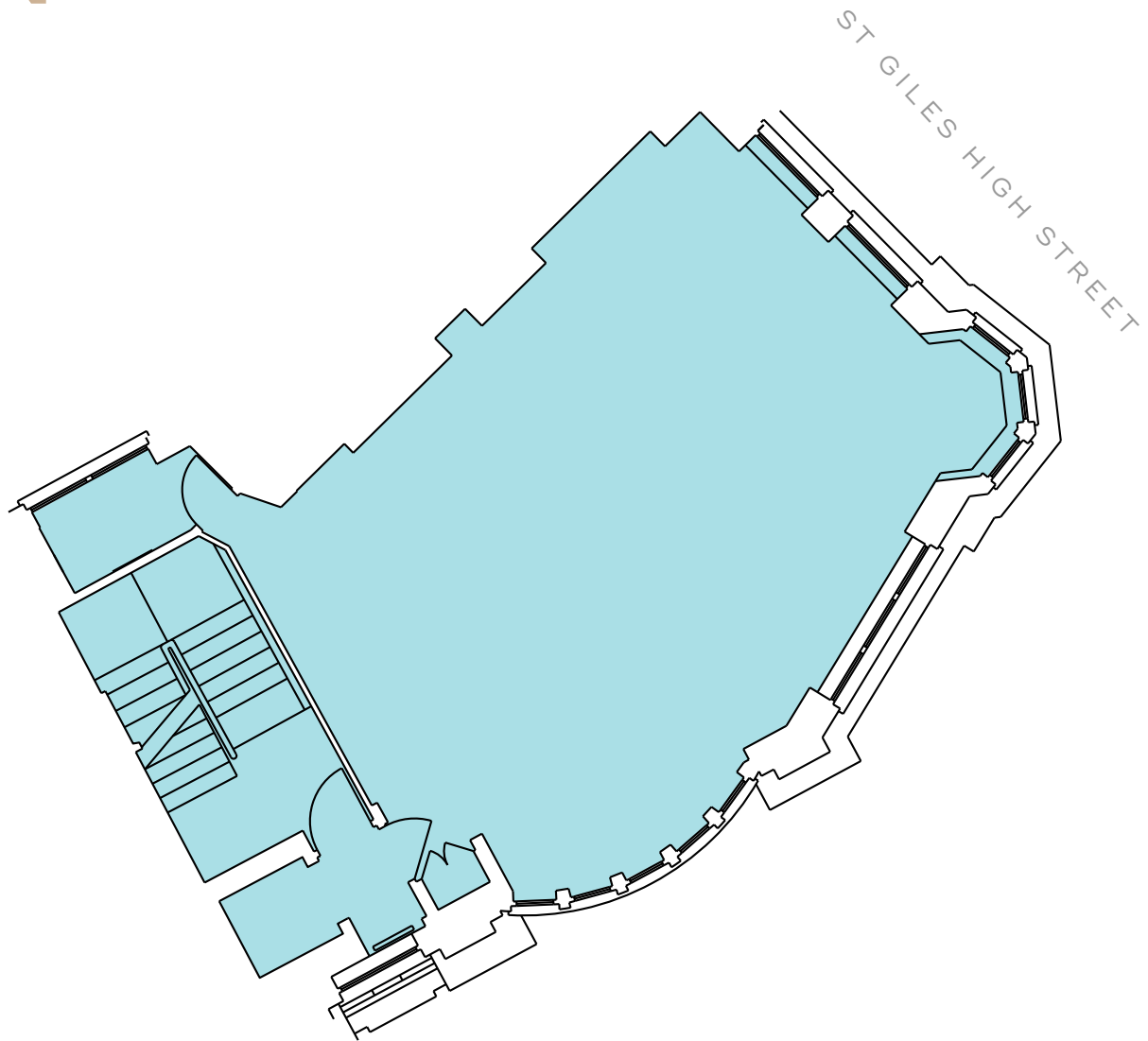
28 Denmark Street
Third Floor

657 sq ft (61 sq m)



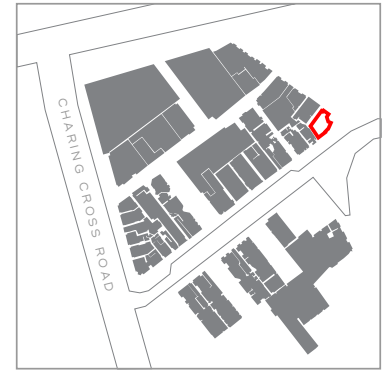
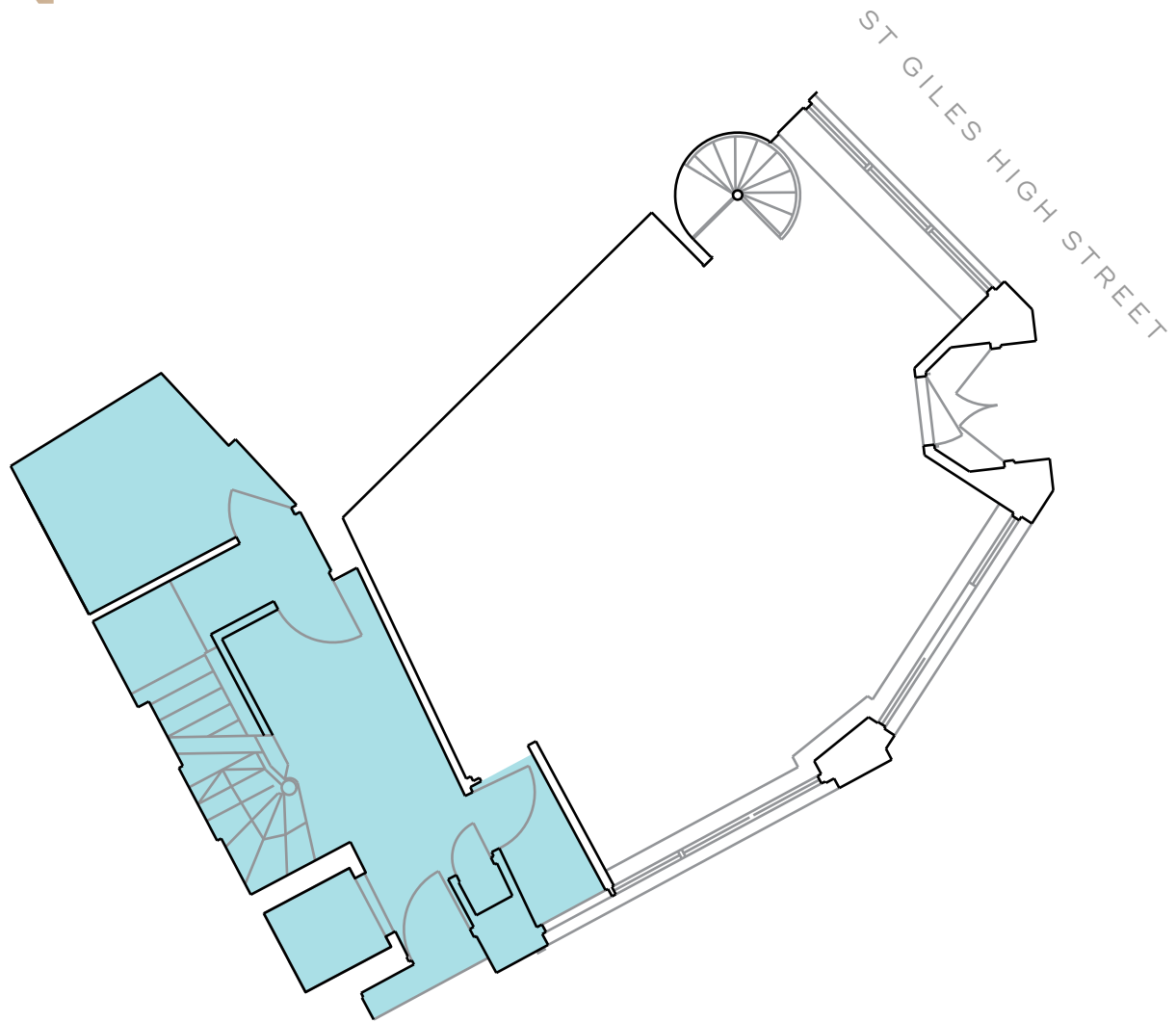
28 Denmark Street
Second Floor

669 sq ft (62 sq m)



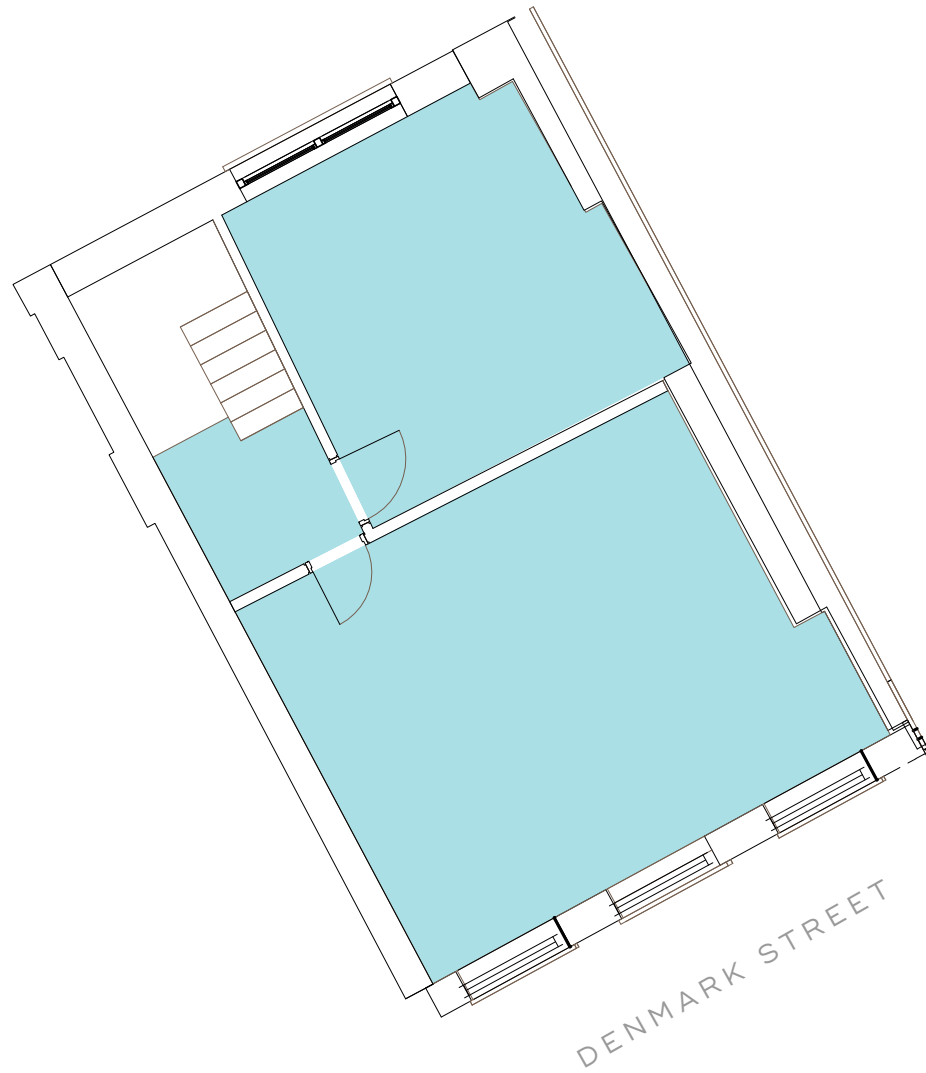
28 Denmark Street
First Floor

691 sq ft (63 sq m)



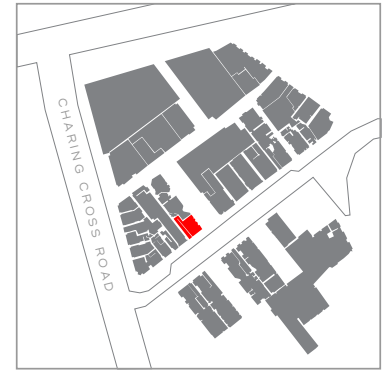
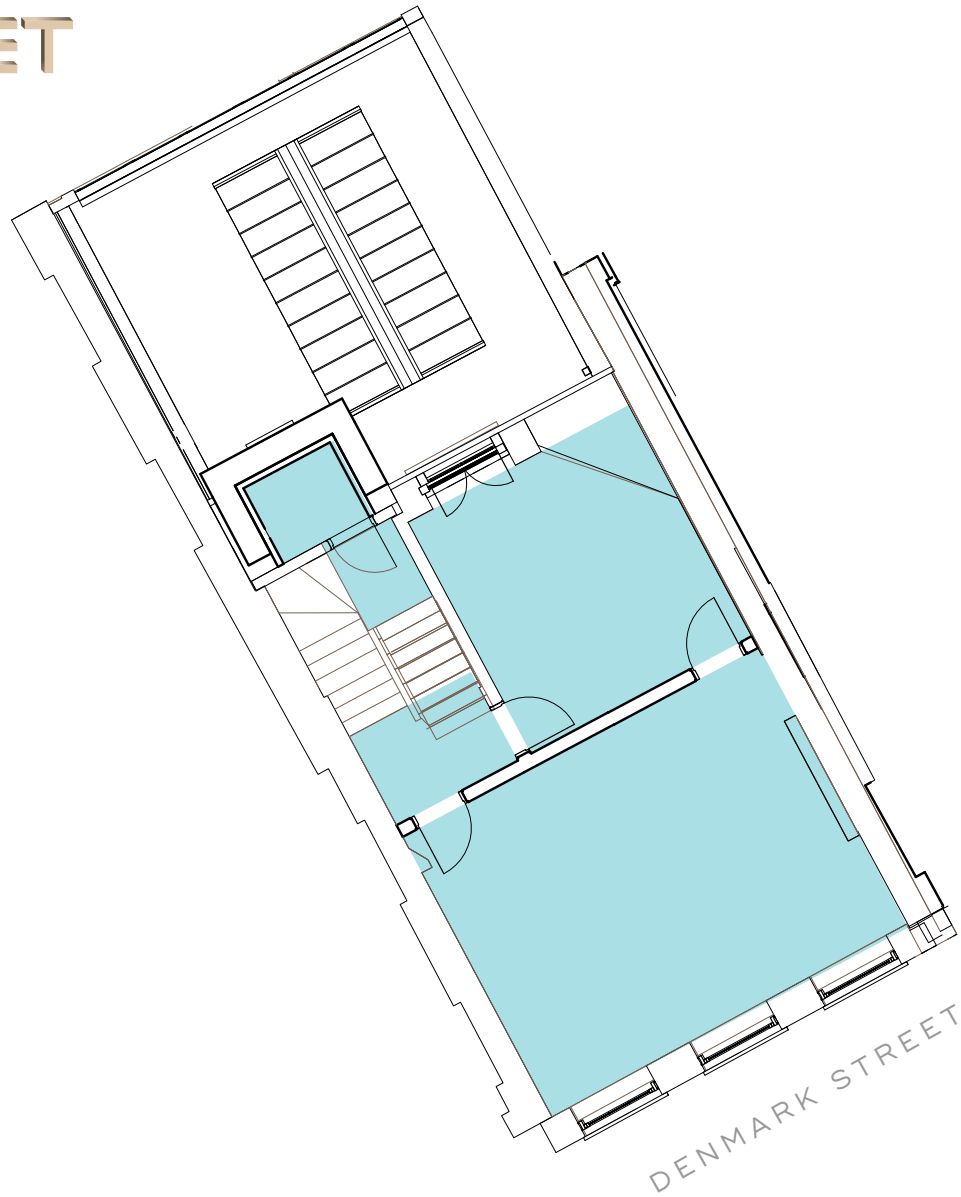
28 Denmark Street
Ground Floor

535 sq ft (50 sq m)



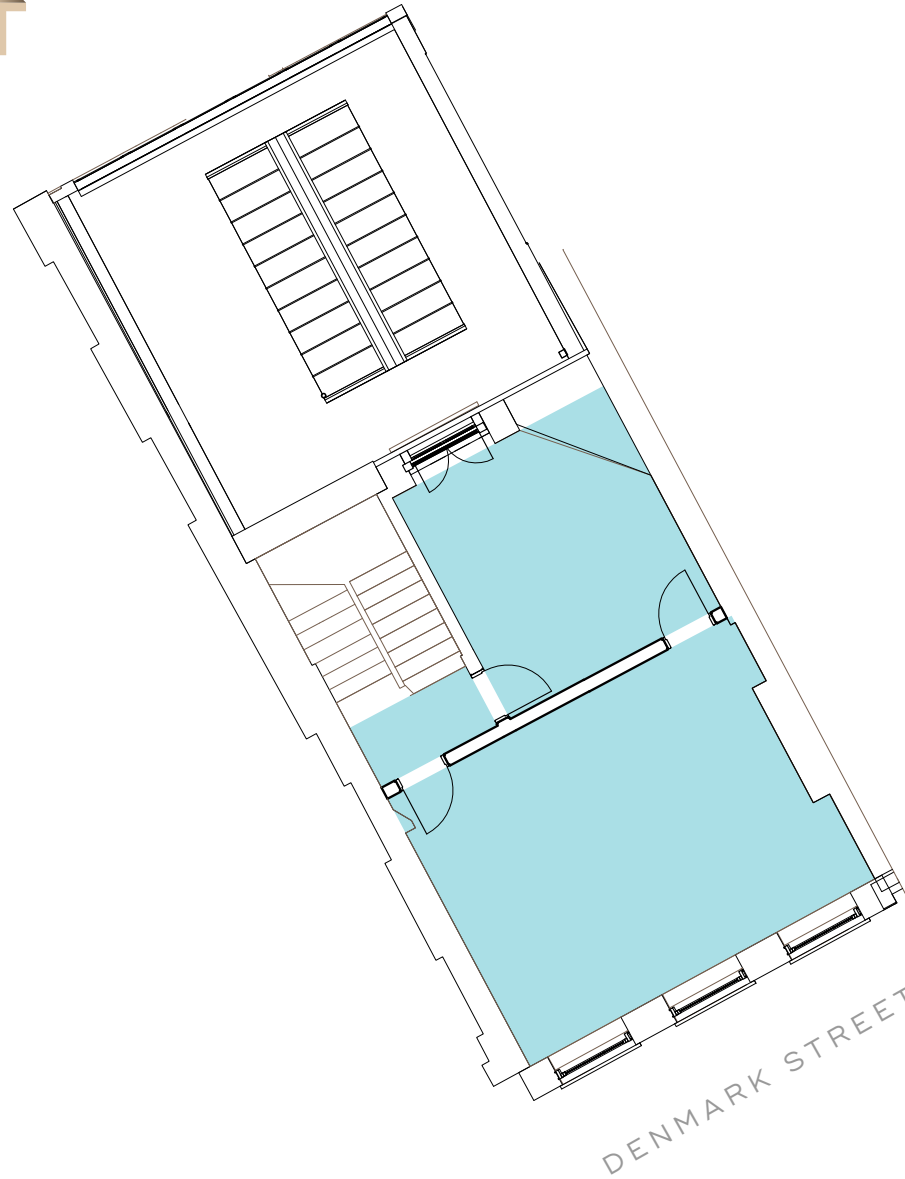
20 Denmark Street
Third Floor

441 sq ft (41 sq m)



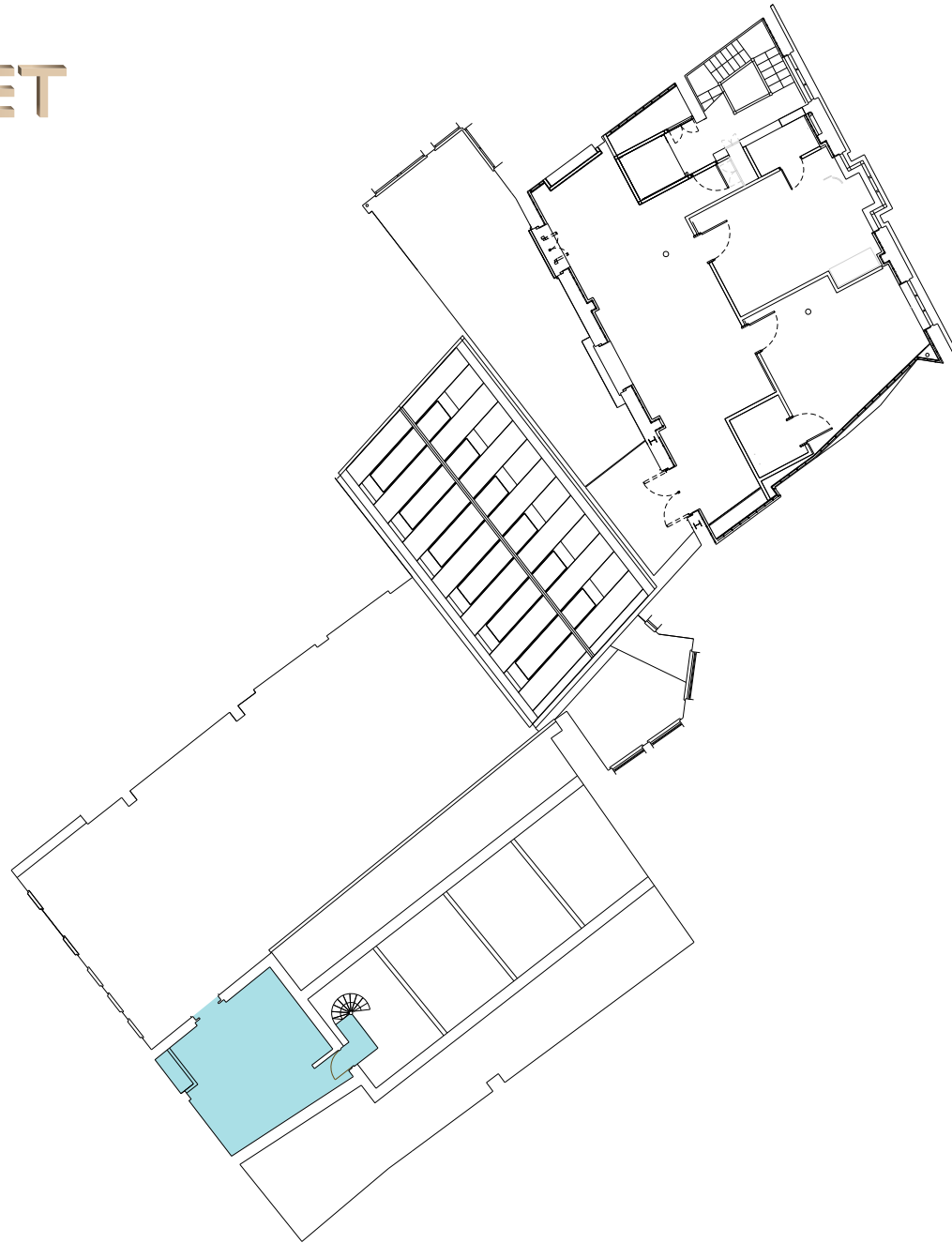
20 Denmark Street
Second Floor

441 sq ft (41 sq m)



20 Denmark Street
First Floor

947 sq ft (88 sq m)



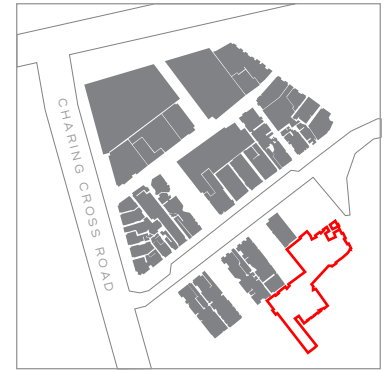
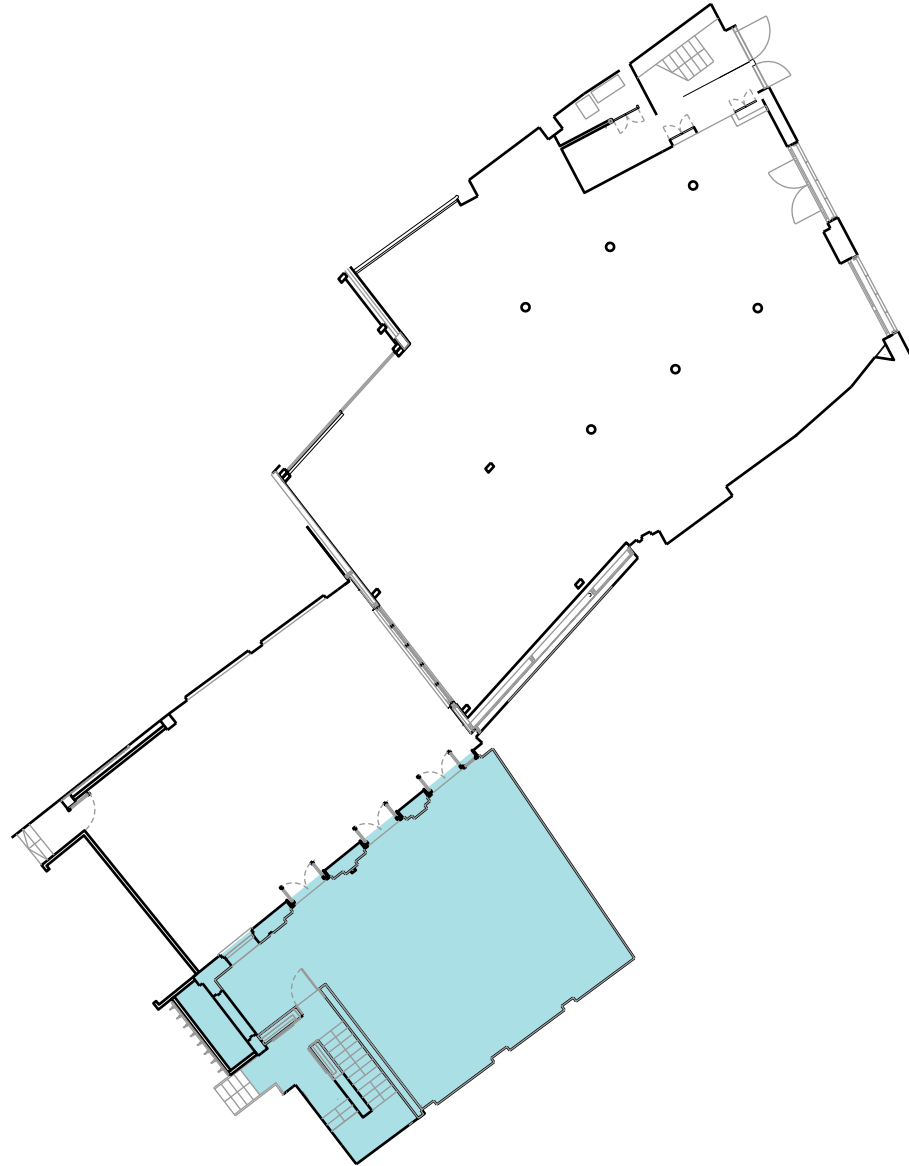
1 Book Mews
Mezzanine Floor

220.6 sq ft (20.5 sq m)



1 Book Mews
First Floor

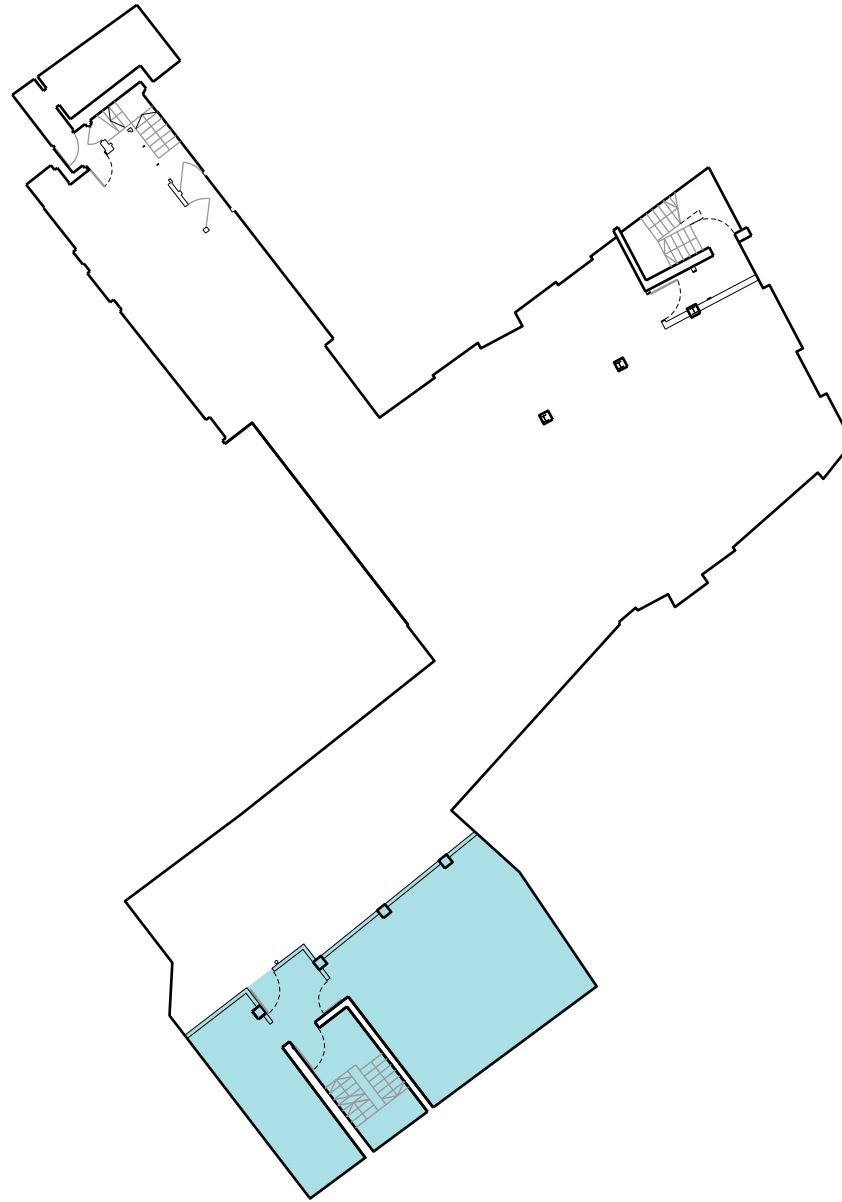
1135.59 sq ft (105.5 sq m)



1 Book Mews
Ground Floor

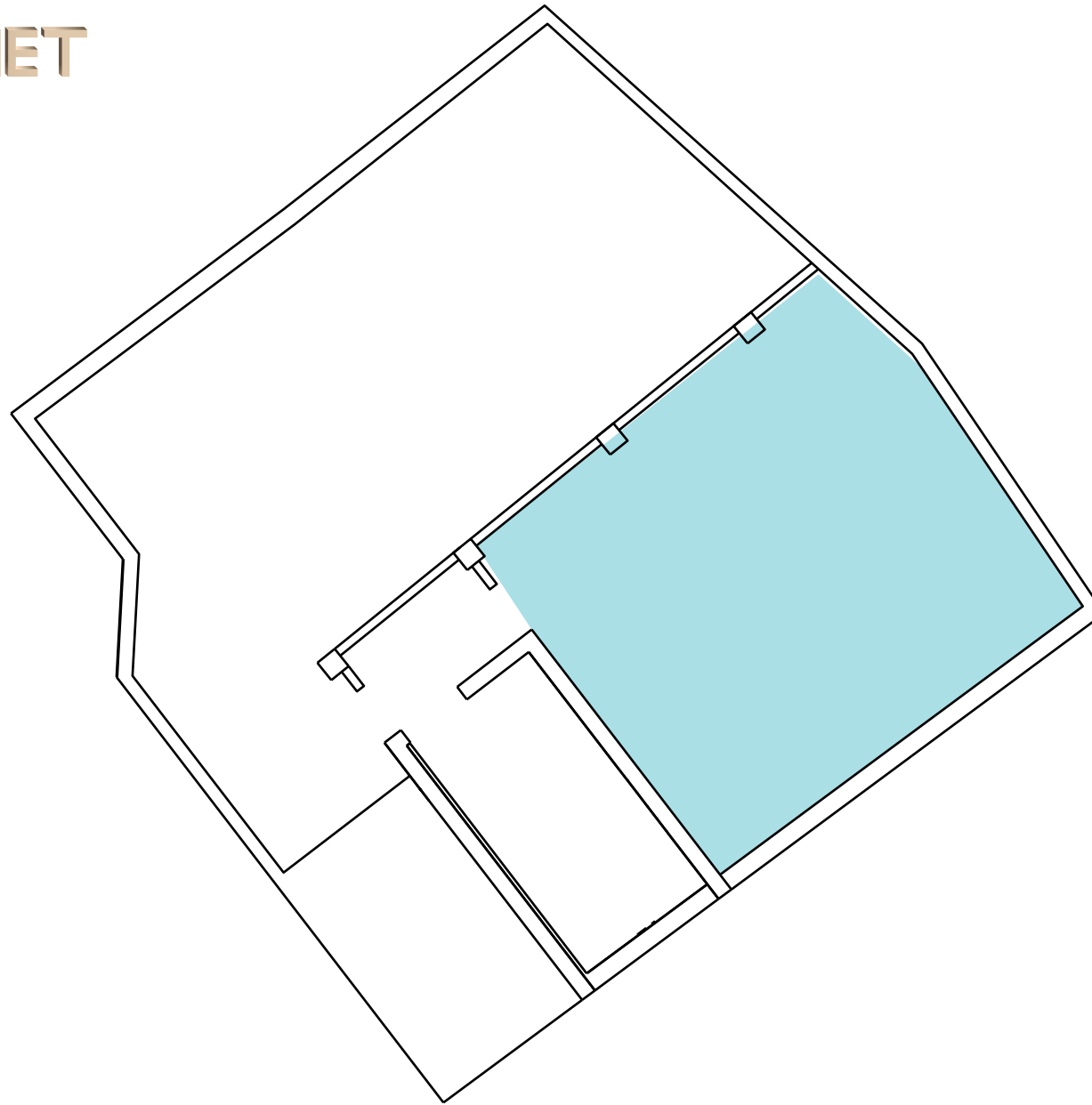
780.3 sq ft (72.5 sq m)





1 Book Mews
Basement Floor

511.2 sq ft (47.5 sq m)



1 Book Mews
Sub Basement Floor

505 sq ft (47 sq m)



CONTACTS

For Office opportunities contact:



Paul Dart
Monmouth Dean
+44 (0)20 7025 1390
pdart@monmouthdean.com

Rebecca Saxon
Monmouth Dean
+44 (0)20 7025 1397
rsaxon@monmouthdean.com

For all media enquiries



Richard Metcalfe
Outernet Global Ltd
26 Soho Square, London W1D 4NU
+44 (0)20 7494 0494
Richard@Outernetglobal.com

